

WWW.**JFASHOW**.COM

Schaumburg, Illinois

Renaissance Schaumburg Hotel & Convention Center

August 27 - 29, 2010

TransWorld's
jf&a
jewelry. fashion & accessories

End Of Summer Show

Dear Exhibitor,

We are pleased to send you the Exhibitor Service Kit for **TransWorld's Jewelry, Fashion & Accessories Show, August 27 - 29, 2010, at the Renaissance Schaumburg Hotel & Convention Center in Schaumburg, IL.**

Inside this Exhibitor Service Kit, you will find all of the materials and forms necessary to successfully plan and participate in this exciting exposition. Please take the time now to review the contents of this kit and familiarize yourself with all of the important information included. A few sections to note and refer to throughout your planning are:

- The Exhibitor Service Kit contains pertinent information such as address and directions to the exhibit hall, move-in rules and regulations, exhibitor checklist / deadline dates, a listing of key personnel, directory forms, index form, badge order form and booth display guidelines.
- The Exhibitor Service Kit also contains forms that pertain to the general contractor, Viper Tradeshow Services, exhibit hall and other service and vendor order forms. Please look through this section as you will find information regarding freight, furniture, carpet and utility forms.

We want to ensure that your exhibiting experience is a pleasant one. If you have questions or we can be of help in any way, please feel free to call or e-mail us.

Sincerely,
Show Management
TransWorld Exhibits, Inc.

www.jfashow.com

EXHIBITOR CHECKLIST/DEADLINE DATES *End Of Summer Show*

We have highlighted some important dates that you should not miss. Please review your Exhibitor Service Kit for other services that you may need for installation of your booth.

SUBMIT TO TRANSWORLD EXHIBITS

Return Exhibit Contract and Booth Balance (if applicable)	ASAP
Directory Forms	
Directory Information Form	July 30, 2010
Product Index List	July 30, 2010
Exhibitor Badge Request Form	July 30, 2010
Exhibitor Invitations Order Form	July 30, 2010
Advertising Order Form	July 30, 2010
Certificate of Insurance	July 30, 2010

SUBMIT TO RENAISSANCE SCHAUMBURG

Exhibitor Approval Application	August 6, 2010
Audio Visual Equipment Rental (video, computer, telecommunications)	August 6, 2010
Utility Service Order (water, air, gas, drainage)	August 6, 2010

SUBMIT TO VIPER TRADESHOW SERVICES

Electrical Service Order Form	August 6, 2010
Material Handling	
Furnishings, Booth Carpet & Accessories	August 6, 2010
Hall aisles are not carpeted	
Pegboard (4'x8') rental under Accessories	
Custom Furnishings	August 6, 2010
Forklift & Rigging Order Forms	August 6, 2010
Furniture Package Order Form	August 6, 2010
Showcase/ VuCase Rental Order Form	August 6, 2010
Floral/ Vacuuming/ Porter Service	August 6, 2010
Display labor Order Form (Install & Dismantle)	August 6, 2010

SUBMIT TO BRINKS/DUNBAR SERVICES

BRINKS Security & Insurance Forms	August 6, 2010
Dunbar Security & Insurance Forms	August 6, 2010

PLEASE PAY CLOSE ATTENTION TO THESE DEADLINE DATES. IF YOU DO NOT SEND YOUR FORMS IN BY THE DEADLINE DATES, YOU WILL INCUR ADDITIONAL CHARGES.

WWW.JFASHOW.COM

Schaumburg, Illinois

Renaissance Schaumburg Hotel & Convention Center

August 27 - 29, 2010

TransWorld's
jf&a
jewelry, fashion & accessories

KEY CONTACTS/OFFICIAL CONTRACTORS *End Of Summer Show*

SHOW MANAGEMENT

Please contact us at any time with any questions regarding your exhibit space, show schedule, registration or marketing opportunities.

TRANSWORLD EXHIBITS

1850 Oak Street

Northfield, IL 60093

www.jfashow.com

P: 847-446-8434

800-323-5462

F: 847-446-3523

MANAGEMENT

Joe Thaler x207

Jennifer Braverman x215

Claire Adair x206

Steve Stillson x219

REGISTRATION

Donna Connolly x225

Betty Cady x220

Ron Carlson x227

MARKETING

Yianna Manokas x211

OPERATIONS

Stephanie Geitner x209

SALES

Don Olstinske x208

Jillian Krause Sawyer x200

Jim Rohrlack x228

Michael Lisberg x221

don@tweshows.com

j.krause@tweshows.com

jim@tweshows.com

m.lisberg@tweshows.com

SALES ADMINISTRATION

Connie Lasalvia x224

VIPER TRADESHOW SERVICES

The General Contractor can assist with any furniture, carpeting, booth display, cleaning, electrical, telephone, internet, labor and freight service questions or requirements you may have.

CUSTOMER SERVICE

Viper Tradeshow Services

2575 Northwest Parkway

Elgin, IL 60124

Phone: (847) 426-3100 / Fax: (847) 426-3111

Contact: Patty

E-Mail: pmadsen@vipertradeshow.com

CATERING

Renaissance Schaumburg Hotel & Convention Center

Schaumburg, IL 60173

Contact: David Schulze

Phone: (847) 303-4135 / Fax: (847) 303-4323

RENAISSANCE HOTEL

1551 North Thoreau Drive

Schaumburg, IL 60173

(847) 303-4100

DUNBAR GLOBAL LOGISTICS

Phone: (800) 554-7363

www.dunbargloballogistics.com

BRINKS GLOBAL SERVICES US

Phone: (800) 232-3149

Fax: (212) 704-9523

GENERAL SHOW INFORMATION

EXHIBIT HALL LOCATION – DISCOVERY & EXPLORATION HALLS

Renaissance Schaumburg Hotel & Convention Center
 1551 North Thoreau Drive
 Schaumburg, IL 60173

P: 847-303-4100
 F: 847-303-4323
 www.renaissancehotels.com

EXHIBITOR MOVE-IN SCHEDULE

Thursday August 26, 2010 8:00am to 6:00pm

All exhibits/displays must be set by 6:00pm on Thursday, August 26, 2010. All crates and packing materials must be removed from the exhibit floor at that time. Please keep the aisles clear in order to install aisle carpet.

SHOW SCHEDULE

Friday August 27, 2010 9:30am to 5:30pm
 Saturday August 28, 2010 9:30am to 5:30pm
 Sunday August 29, 2010 9:30am to 5:30pm

Exhibitors will be allowed access to exhibit hall starting 8:00am each morning.

EXHIBIT MOVE-OUT SCHEDULE

Sunday August 29, 2010 5:30pm to 10:00pm
Force at 9:00pm

Move-out cannot begin and freight doors will not be opened until all attendees are off the exhibit floor and all aisle carpet has been removed.

Viper Tradeshows will have labor on the show floor only if ordered in advance. Otherwise, you will be responsible for dismantling your booth and having your properties off show floor by 10pm.

If you require your freight to be picked up via van line, you must make arrangements for this to happen on Sunday, August 29, 2010, between 6pm and 9pm, before the FORCE at 9pm.

EXHIBITOR REGISTRATION HOURS

Thursday August 26, 2010 8:00am to 6:00pm
 Friday August 27, 2010 8:00am to 5:30pm
 Saturday August 28, 2010 8:00am to 5:30pm
 Sunday August 29, 2010 8:00am to 5:30pm

ATTENDEE REGISTRATION HOURS

Friday August 27, 2010 9:00am to 5:30pm
 Saturday August 28, 2010 9:00am to 5:30pm
 Sunday August 29, 2010 9:00am to 5:30pm

GENERAL SHOW INFORMATION CONTINUED

End Of Summer Show

ATM MACHINE

One ATM machine is located in the lobby of the convention center across from our registration desks. There is another machine located in the Hotel (lobby second floor).

ACCESSIBLE STORAGE

An accessible storage area will be available during the show. Please note: Storage behind your booth is not permitted per the Schaumburg Fire Marshall. The storage area is complimentary to all exhibitors. The storage area will be available beginning Thursday, August 26, 2010, 1:00 p.m.

CRATE STORAGE (EMPTY CONTAINERS)

Viper Tradeshow Services will have your crates and packing material stored for free. Please place an empty sticker, which you can obtain from the Viper Service Desk, (along with your company name & booth number) on items to be stored. Storage behind your booth space is not permitted.

CONCESSION STAND

The concession stand is located at the back of the exhibit hall. The concession stand will be open during show days and show hours only.

EMERGENCY ASSISTANCE / FIRST AID

In case of an emergency, contact a security guard at the show entrance or go to the show office. The appropriate service will be contacted.

EXHIBITOR SERVICE CENTER

The Viper Tradeshow Exhibitor Service Center will be located to the left of the 100 Aisle and will be open and operational during setup and dismantle. Please visit the Viper Tradeshow Service Center for any of your exhibitor needs. A Viper representative will be on call during show hours if a need arises.

EXHIBITOR PARKING

The hotel parking lot is not to be used for storage of any oversized vehicles, to include but not limited to trailers and semi-trucks longer than 32'. Unless a such-sized trailer or truck is being loaded or unloaded, it must be removed from the Hotel and Convention Center property. All other oversized vehicles (shorter than 32') must be parked in the South parking lot, not taking up more than 2 spaces at the time.

BUYER PARKING

Complimentary self-parking is available at the Hotel and at the Convention Center. Valet parking is available at the Hotel (\$14 per 24 hours). A trolley will be running from the Woodfield Mall to the Convention Center during show hours. If warranted, remote parking will be available and a shuttle service to and from the remote parking lots to the show will be offered by the Convention Center.

SECURITY

The Jewelry, Fashion & Accessories Show will maintain 24-hour perimeter security at the Renaissance Schaumburg Hotel & Convention Center from initial set-up through move-out, however, it is the exhibitor's responsibility to secure their booth, equipment, merchandise and all personal items at all times. If you would like to hire private security for your booth, please contact Viper Tradeshow Services.

TRANSWORLD SHOW OFFICE

The TransWorld Show Office located just outside the front of the exhibit hall will be open and operational beginning at 8:00 a.m. on Thursday, August 26, 2010, through 6:00 p.m., Sunday, August 29, 2010.

STANDARD BOOTH EQUIPMENT

End Of Summer Show

SINGLE BOOTH SPACE: 10'x10'

Your Exhibit Space includes:

- One (1) 7"x44" booth identification sign
 The sign will be imprinted with your company name and booth number and will be hung in your booth prior to the opening of the show.
- 8' high draped back wall and 3' high draped side rails
- Complimentary exhibitor badges
- Unlimited complimentary invitations (while supplies last)
- Company listing in the Official Show Directory
- Complimentary booth packages

You must fill out the Viper Tradeshow Package Furniture order form and fax back directly to Viper Tradeshow by August 6, 2010, in order to take advantage of the complimentary packages. If you do not return the order form, no furnishings will be delivered to your booth.

PACKAGE A

- 8' Back Wall Pipe & Drape
- 3' Side Wall Pipe & Drape
- 3 Undraped Tables in 4', 6' or 8' Length
- 2 Side Chairs
- 3 Undraped Table Risers
- 1 Wastebasket
- 1 - 7"x44" Booth ID Sign

PACKAGE B

- 8' Back Wall Pipe & Drape
- 3' Side Wall Pipe & Drape
- 1 Undraped Tables in 4', 6' or 8' Length
- 2 Side Chairs
- 2 Additional 8' Uprights and Bases
- 1 Wastebasket
- 2 - 10' Crossbars
- 1 - 7"x44" Booth ID Sign

Additional furnishings such as electrical, internet services, etc., are not included in your booth fees and must be ordered directly through Viper Tradeshow Services.

EXHIBIT HALL DECORATIONS

Aisles are not carpeted

Aisles 100-500	Fashion & Accessories	Purple & White Back Drape Purple Side Rails
Aisles 600-800	Fine Jewelry	Purple & White Back Drape Purple Side Rails
Aisles 900-1000	Custom/Silver Jewelry	Purple & White Back Drape Purple Side Rails

EXHIBIT RULES & REGULATIONS

End Of Summer Show

To help ensure the safety and security of all persons in the exhibit hall, TransWorld Exhibits, the general contractor and the exhibit hall put the following Exhibit Rules and Regulations together. If at any time you have a question or concern regarding the Exhibit Rules and Regulations, please contact your TransWorld Exhibit's account executive at (800) 323-5462.

AGREEMENT TO RULES & REGULATIONS

By participating in the Jewelry, Fashion & Accessories Show, exhibitors are responsible for compliance with all exhibit hall, general contractor and TransWorld Exhibits rules and regulations. Please familiarize yourself with all rules and regulations. The general regulations governing the Jewelry, Fashion & Accessories Show are printed on the back of your exhibit space contract.

AISLES

All aisle space belongs to show management. No exhibit display, product or equipment will be allowed to extend beyond the space assigned to the exhibitor. This also prohibits extending items in the air over aisles like banners, display trusses, vehicle arms, and scaffolding.

BADGES

Everyone on the exhibit floor must wear a badge at all times. The Exhibitor Badge Order Form is included in this kit and must be submitted by **July 30, 2010**. After **July 30**, you may obtain your exhibitor badges on-site at the Exhibitor Registration Counter starting **Thursday, August 26, 2010 at 8:00 a.m.**

CERTIFICATE OF INSURANCE - SEE LIABILITY INSURANCE

All exhibitors at any TransWorld Exhibits show are required to supply a Certificate of Insurance for general liability. Please see Cooking & Food demonstrations paragraph for further information on food sampling.

TransWorld Exhibits, its employees and contractors are not responsible for any loss to exhibitor by reason of theft, transportation perils, fire, breakage, etc. **The Jewelry, Fashion & Accessories Show** requires each exhibitor to carry liability insurance in an amount not less than \$1,000,000 bodily injury and property damage combined. Show management requires exhibitors to file a certificate of liability insurance naming **The Jewelry, Fashion & Accessories Show** and TransWorld Exhibits as additional insured or as their interest may appear.

Exhibitors that will have a vehicle in their booth must also supply a Certificate of Insurance for Vehicle / Comprehensive General Liability. Please send all certificates by **July 30, 2010** to: TransWorld Exhibits, **the Jewelry, Fashion & Accessories Show**, 1850 Oak Street, Northfield, IL 60093, (847) 446-8434, Attention: Stephanie Geitner.

CHILDREN

No children under the age of 16 (must show photo ID with proof of age) will be permitted on the exhibit floor at any time during set-up, exhibit hours, or dismantling. There will be no exceptions to this policy.

EXHIBIT RULES & REGULATIONS

End Of Summer Show

COOKING & FOOD DEMONSTRATIONS

Please contact Heather Cornell, Renaissance Schaumburg Hotel & Convention Center, (847) 303-4185 for complete guidelines for cooking & food demonstrations. The following is basic information to help answer some questions regarding cooking and food demonstrations:

Exhibitors who will be distributing food samples of any type must comply with the Village of Schaumburg regulations. Intent to do so must be noted on your Exhibitor Approval Application.

COOKING EXHIBITS

Cooking and food warming devices used in exhibit booths shall comply with the following:

- The use of LP gas shall be limited to (1) 12-lb. water capacity (5-lb. LP-Gas capacity) cylinder to be used for cooking demonstration purposes only. A 20' separation is required from other LPG containers. Spare cylinders shall be inaccessible to the public and stored in a caged container.
- Cooking devices shall be separated from the public by not less than four feet or by a barrier.
- Ventless exhaust/suppression systems are required for grease laden vapors.
- Deep fat fryers are to be thermostat controlled.
- Combustible materials will not be located near deep fat fryers.
- One K type extinguisher shall be provided for deep fat fryer units. A 4A60BC extinguisher shall be provided for all other cooking appliances.
- Chafing dishes are to be designed for a shelf for the fuel or the dish is to be placed on a sheet pan.

In addition to the above, all requirements of the Schaumburg Community Development Department/Environmental Health Services as applicable must be met.

CONSUMABLE GOODS

Food being prepared for sale or giveaway by an exhibitor shall fill out an Exhibitor Approval Application. The exhibitor shall be interviewed and the booth shall be inspected by the Village of Schaumburg Community Development Department / Environmental Health Services Division. The following is a list of requirements:

- All food shall be obtained from approved sources complying with applicable State of Illinois Rules and Regulations. Home canned and home prepared foods are prohibited.
- If potentially hazardous foods are sold or served, they shall be prepared and packaged in an approved facility that complies with applicable State Rules and Regulations. Internal temperature of potentially hazardous foods shall be maintained at 41 degrees F or below, or 140 degrees F or above.
- Potentially hazardous foods shall be cooked to the required internal temperature:
- Poultry – internal temperature of 165 degrees F for 15 seconds.
- Pork, ham and all ground meats – internal temperature of 155 degrees F for 15 seconds.
- All other potentially hazardous foods – internal temperature of 145 degrees F for 15 seconds.
- The menu shall be planned to avoid having any leftover food. Prepare perishable foods in small quantities. Leftover potentially hazardous foods shall be discarded and not be offered for sale on the following day.
- Ice, which will be consumed or will come into contact with food, shall be obtained from an approved source.

EXHIBIT RULES & REGULATIONS

End Of Summer Show

CONSUMABLE GOODS CONTINUED...

- Handling of food shall be minimized by the appropriate use of utensils such as deli tissue, scoops, tongs, spoons, forks, spatulas, or single-use gloves.
- All food on display shall be adequately covered and be protected from cross contamination. Effective shielding may also be provided.
- Condiments shall be individually packaged or dispensed from an approved dispenser.
- All equipment to be kept clean and sanitary.
- Strict attention shall be given to personal hygiene. Conveniently located hand washing stations are required for individuals handling and preparing food.
- Depending upon the event, centralized areas may be established for the storage of food, hand washing and other related activities.
- Food handlers shall have taken an approved food safety course and be certified.

SALE OR SAMPLING OF ALCOHOLIC BEVERAGES

Sale or sampling of alcoholic beverages requires the exhibitor to obtain a one-day license from the Village of Schaumburg. The following rules apply:

- If an exhibitor plans to distribute or sell alcohol at an exhibit booth in the Convention Center, they must come into the Village President's Office at 101 Schaumburg Court, Schaumburg, IL, to obtain a one-day license. The following is a list of requirements that the exhibitor must comply with when wanting to sell or give away samples of liquor.
- The exhibitor that will be selling or giving away alcohol must come to the Village Hall to purchase a Class D One Day Liquor License for \$37.50. If the event is a two-day event, 2 Class D One Day Liquor Licenses shall be purchased, and so on.
- The exhibitor needs to put the request on their company's letterhead and the license will be processed in the name of the company.
- The exhibitor needs to provide the date, hours and reason for the event, a contact name and phone number and the name and location of the event on that letter.
- There is also a half page form that must be completed in the Office of the Liquor Commissioner / Village President. After the form is filled out, a copy will be provided to the Finance Department and the Mayor's office.
- The exhibitor requesting the one day liquor license will be provided a page containing the main points of the ordinance that they must comply with for their reference.
- The exhibitor will also be required to sign another copy that will be maintained in the Mayor's office.
- The exhibitor will be given a liquor license that must be displayed at their booth during the duration of the event. The booth may be inspected by the Schaumburg Police Department.

Contact for sale/sampling of liquor:

Carmen Anguiano (847-923-4402)
canguiano@ci.schaumburg.il.us
Mayor's Office/Liquor Commissioner
Class D One Day Liquor License

EXHIBIT RULES & REGULATIONS

End Of Summer Show

DAMAGE OF PROPERTY

The exhibitor is liable for any damage caused to building floors, walls or columns, to standard booth equipment or to other exhibitors' property. The exhibitor may not apply paint, lacquer, adhesives or other coatings to building, floors or to standard booth equipment.

DEMONSTRATIONS & SPECIAL EVENTS

All demonstrations, interviews, and special activities must be contained within the limits of an exhibitor's assigned exhibit space. Distribution of printed material outside your assigned exhibit space is prohibited, unless approved by show management. Special events must be coordinated with show management. Under no circumstances will special events be permitted to conflict with official show hours. **No promotional activities or marketing activities may be conducted in the parking lot or in surrounding areas outside the exhibit hall during the show.**

DISABILITY PRVISIONS

Exhibitors shall have sole responsibility for ensuring that their exhibit is in full compliance with the Americans with Disabilities Act and any other regulations implemented by that Act.

DISMANTLING OF BOOTH

Exhibitors' display and product may not be dismantled and packed in preparation for removal prior to the official closing of the exhibits. Move-out and dismantling of display material and equipment cannot begin until the show floor has been cleared of attendees. Removal of aisle carpet and opening of freight doors will not proceed until the official closing of the exhibits. Please keep all exhibit materials out of the aisles until the aisle carpet has been completely removed.

DISPLAY RULES & REGULATIONS

The display rules are in the Exhibitor Service Kit. Exhibitors are required to adhere to all the display rules and regulations as outlined on the back of sales contract and in the Exhibitor Service Kit.

EXHIBITOR APPOINTED CONTRACTORS

An Exhibitor Appointed Contractor (EAC) is a company or an individual, other than those found in the Exhibitor Service Kit, who supplies a product or service. EAC's include, but are not limited to, installation & dismantle services as well as audiovisual equipment or transportation providers who require access into the exhibit hall. All EAC's must conform to all local union rules, regulations, and jurisdictions. Exhibitors are responsible for the actions of their non-official contractors and sub-contractors. It is the exhibitor's responsibility to make sure their EAC's obtain and submit an original copy of their Certificate of Insurance to TransWorld Exhibits. EAC's who have not sent an original copy of their Certificate of Insurance will NOT be allowed onto the exhibit floor. Viper Tradeshow Services is the official and exclusive general contractor for the show. I&D companies will be permitted to perform display labor providing the Certificate of Insurance and EAC letter is received by Viper Tradeshow Services. If an exhibitor wishes to hire an I&D company to supervise the installation and dismantle of their booth, the I&D company must follow the EAC procedures as outlined above as well as submit a Certificate of Insurance to Viper Tradeshow Services and fill out the EAC form provided by Viper Tradeshow Services. Exhibitors wishing to use an EAC (non-official contractor) must send their requests in writing on company letterhead by July 30, 2010, to Viper Tradeshow Services.

EXHIBIT RULES & REGULATIONS

FIRE REGULATIONS

All display materials must be fire resistant or treated with flame retardant solution to meet requirements of the standard flame test as provided in the local municipal code for fire protection. No obstruction, such as chairs, tables, displays, easels or stanchions, will be allowed to protrude into the aisles. Access to all four sides of the hall columns must be maintained. Each exhibitor is charged with the knowledge of all laws, ordinances and regulations pertaining to health, fire prevention and public safety while participating in the Expo. Compliance is mandatory and the sole responsibility of each exhibitor. Storage behind booth space is a fire hazard and will not be permitted. Accessible storage will be available onsite.

FIRE HOSE CABINETS, PULL STATIONS, AISLES, EXITS, LOADING DOCKS, DOORS & RAMPS

Each of these must be visible and accessible at all times, including inside exhibit space. Chairs, tables, product and display equipment must be kept clear of aisles, corridors, stairways and other exits.

FOOD SERVICE

No food or beverage may be brought into the Convention Center from outside the facility. Renaissance Schaumburg Hotel & Convention Center has exclusive rights to all food & beverage. Please contact Heather Cornell (847-303-4185) for more information regarding food demonstrations & cooking in your booth.

HANGING SIGNS

Hanging sign requests must be submitted by August 6, 2010 to Viper Tradeshow Services. Please contact Viper Tradeshow Services, Missy Kordecki, 847-426-3100, for additional information.

INSTALLATION

Exhibit installation and dismantling duties are set forth in this Exhibitor Service Kit. No exhibit material should arrive to the exhibit hall prior to the first day of exhibitor move-in. All exhibits must be complete, packing materials and crates removed from the aisles and exhibit hall by 6:00 p.m., Thursday, August 6, 2010, the day before the exhibit hall opens.

LIABILITY INSURANCE

TransWorld Exhibits, its employees and contractors are not responsible for any loss to exhibitor by reason of theft, transportation perils, fire, breakage, etc. **The Jewelry, Fashion & Accessories Show** requires each exhibitor to carry liability insurance in an amount not less than \$1,000,000 bodily injury and property damage combined. Show management requires exhibitors to file a Certificate of Liability Insurance naming **the Jewelry, Fashion & Accessories Show** and TransWorld Exhibits as additional insured or as their interest may appear. Exhibitors that will have a vehicle in their booth must also supply a Certificate of Insurance for Vehicle / Comprehensive General Liability. Please send all certificates by **July 30, 2010**, to: TransWorld Exhibits, **the Jewelry, Fashion & Accessories Show**, 1850 Oak Street, Northfield, IL 60093, (847) 446-8434, Attention: Stephanie Geitner.

LOADING DOCKS, DOORS & RAMPS

All exhibitors must check in with Viper Tradeshow Services' dock master, prior to unloading booth materials and equipment. The Convention Center's Receiving Dock is on the east side of the building. There will be no parking to unload vehicles in front of the Renaissance Schaumburg Hotel & Convention Center or any location other than the Convention Center loading docks. Unloading through the lobby is prohibited.

WWW.JFASHOW.COM

Schaumburg, Illinois

Renaissance Schaumburg Hotel & Convention Center

August 27 - 29, 2010

TransWorld's
jf&a
jewelry, fashion & accessories

EXHIBIT RULES & REGULATIONS

End Of Summer Show

MUSIC

All exhibitors agree to obtain necessary licenses to play or perform live or recorded music and agree to defend, indemnify and hold harmless show management from any damages or expenses incurred by show management due to exhibitors use, or authorization of use, of such music.

SAFETY DEVICES

All exhibitors agree to accept full responsibility for compliance with national, state and city regulations in the provision and maintenance of adequate safety devices on all exhibited equipment. Exhibitors also agree to comply with all exhibit hall Fire & Safety regulations. If planning a demonstration of equipment, please notify show management by July 30, 2010.

SHOW REGULATIONS

Exhibitors shall abide by and observe all laws, rules and regulations of the City of Schaumburg, Renaissance Schaumburg Hotel & Convention Center, Viper Tradeshow Services, TransWorld Exhibits and the facility. Exhibitors shall observe and abide by additional regulations as published in this Exhibitor Service Kit.

SPECIAL SERVICES

Please contact Stephanie Geitner (847) 446-8434, ext. 209, if you or a member of your staff has a disability that requires special services.

SMOKING

Smoking is NOT permitted in the Renaissance Schaumburg Hotel & Convention Center at any time. Please step outside the facility to a designated smoking area provided by the Convention Center.

SPECIAL NOTICE:

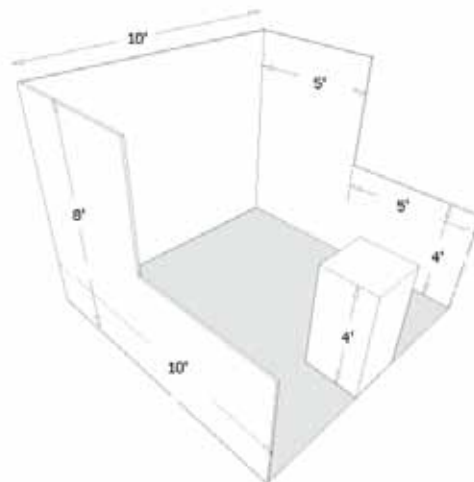
Please review the following rule outlined on the back of each TransWorld Exhibits, Inc. contract: Exhibitors shall abide by and observe all laws, rules and regulations of the Village of Schaumburg, the State of Illinois and the United States of America and the facility. Exhibitors are advised that the sale of counterfeit merchandise is a criminal offense. U.S. Immigration and Customs Enforcement (ICE) special agents may appear on the show floor to inspect merchandise offered for sale. Exhibitor shall observe and abide by additional regulations as published within the "Exhibitor Service Kit" to be delivered to the exhibitor prior to set-up of the show and such additional regulations promulgated from time to time.

DISPLAY RULES & REGULATIONS

LINEAR OR IN-LINE BOOTH

Linear booths have one side exposed to an aisle and are generally arranged in a series along a straight line. Linear booths are ten-feet (10') wide and ten-feet (10') deep, i.e., 10' x 10'. In-line booths have an eight-foot (8') back wall height limit.

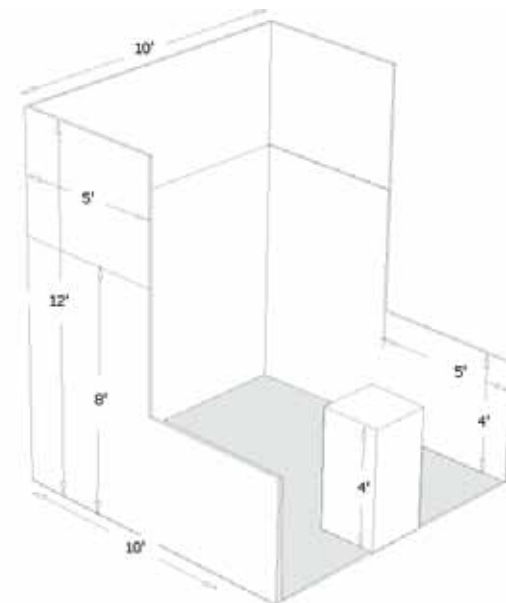
Display materials should not obstruct or block sight lines of neighboring exhibitors. The maximum height of eight-feet (8') is allowed only in the rear half of the booth space, with a four-foot (4') height limit imposed on all materials in the remaining space forward to the aisle. (Note: When three or more Linear Booths are used in combination as a single exhibit space, the four-foot (4') height limitation is applied only to that portion of the exhibit space which is within ten-feet (10') of an adjoining booth).



PERIMETER BOOTH

A Perimeter Booth is a Linear Booth that backs up to a wall of the exhibit facility rather than to another exhibit. Perimeter booths have a twelve foot (12') maximum height limitation.

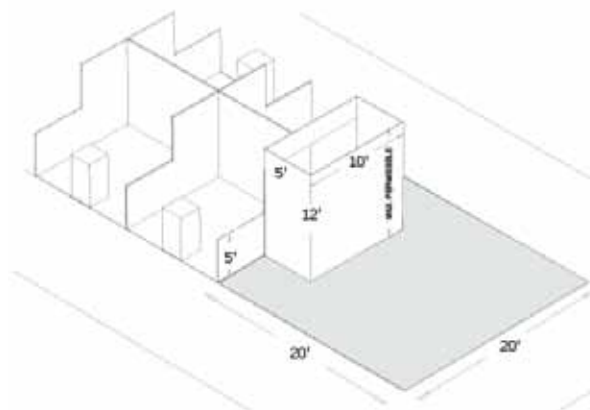
Display materials should not obstruct or block sight lines of neighboring exhibitors. The maximum height of twelve-feet (12') is allowed only in the rear half of the booth, with a four-foot (4') height limit imposed on all materials in the remaining space forward to the aisle. (Note: When three or more Linear Booths are used in combination as a single exhibit space, the four-foot (4') height limitation is applied only to that portion of exhibit space which is within ten-feet (10') of an adjoining booth).



PENINSULA BOOTH

A Peninsula Booth is exposed to aisles on three (3) sides and composed of a minimum of four booths. A Peninsula Booth is 20'x20' or larger.

When a Peninsula Booth backs up to two (2) Linear Booths, the back wall is restricted to four-feet (4') high within five-feet (5') of each aisle, permitting adequate line of sight for the adjoining Linear Booths. Twelve-feet (12') is the maximum height allowance, including signage for the center portion of the back wall.

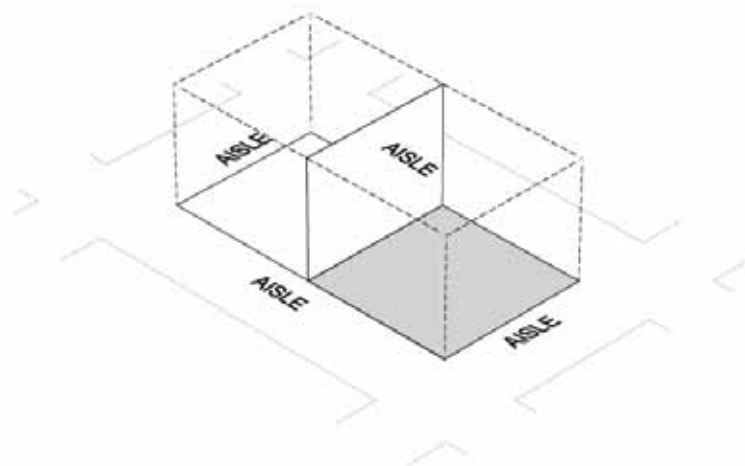


DISPLAY RULES & REGULATIONS

End Of Summer Show

SPLIT ISLAND BOOTH

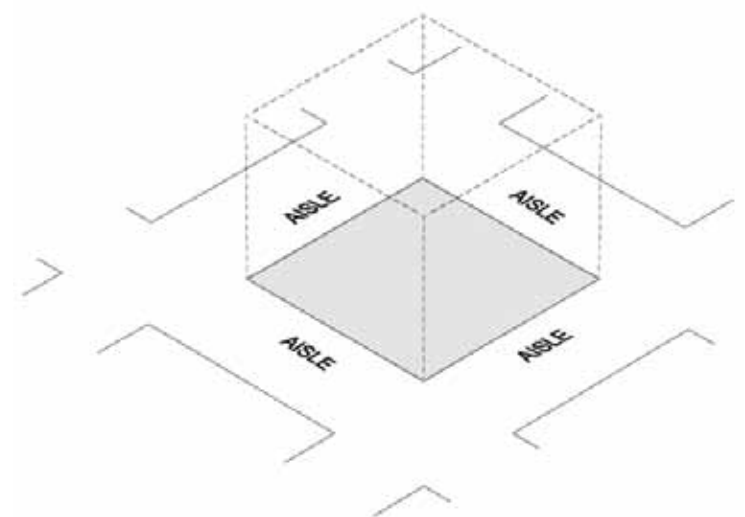
A Split Island Booth is a Peninsula Booth which shares a common back wall with another Peninsula Booth. The entire cubic content of this booth may be used, up to the maximum allowable height, which is sixteen-feet (16'), without any back wall line of sight restrictions. A Split Island is 20'x20' or larger.



ISLAND BOOTH

An Island Booth is any booth exposed to aisles on all four sides. An Island Booth is 20'x20' or larger.

The entire cubic content of the space may be used to the maximum allowable height which is sixteen-feet (16').



PLEASE NOTE:

No part of an exhibitor's display or merchandise will be permitted outside the perimeters of the exhibitor's designated space. Please note that columns and poles located in the aisle near an exhibitor's booth are not part of the exhibitor's booth. The following are some examples of promotional material which are to be kept inside the boundaries of an exhibitor's space: catalogs, price lists, coupons, signs, bulletins, invitations, etc.

Exhibitors who are in any way obstructing or interfering with a neighboring exhibit will be given a warning from Show Management. If the interference continues, it will be up to Show Management to determine whether or not the interfering object or exhibitor will be allowed to remain for the duration of the show.

ADDITIONAL GUIDELINES

End Of Summer Show

- Columns or poles located on the aisle in front of an exhibitor's booth shall not be used as part of the exhibitor's display. Display fixtures, components and merchandise shall not extend beyond the boundaries of an exhibitor's designated space.
- Promotional material used for advertising exhibitor's products such as price lists, catalog sheets, show specials, etc., may only be distributed within the exhibitor's assigned space. Show Management reserves the right to confiscate any material used to promote an exhibitor outside of that exhibitor's booth.
- Exhibitors that have purchased a corner booth will be permitted to utilize the corner portion of the booth to the full 10' depth of the booth on the aisle corner only.
- Exhibitors that have purchased linear exhibit space on booth sides may not obstruct the aisle in any way nor hang signage or graphics over the aisle.
- Canopies may extend out to the aisle line provided. The canopy's support structure may not exceed 3 inches in diameter and all display fixtures, components and merchandise that exceed 42 inches in height must remain in the back portion of the booth. The back portion is defined as that area which is 5 feet from the back wall (as defined by the floor plan) of the booth. Exhibitors are cautioned when installing a display with a canopy or ceiling to check with the local fire department to ensure that displays meet necessary fire safety precautions involving smoke alarms, fire extinguishers, flame retardant material and sprinkler systems.
- Merchandise hanging from crossbars and stanchion poles must remain in the back portion of the booth. The back portion is defined as that area which is 5 feet from the back wall.
- Display features such as cloth racks, pegboards, risers, table racks, shelves, grids and any other fixtures that exceed 3 ½ feet in height, must remain in the back portion of the booth. The back portion is defined as that area which is 5 feet from the back wall. No part of an exhibitor's display or merchandise will be permitted outside the boundaries of the exhibitor's designated space.
- Columns or poles located on the aisle in front of an exhibitor's booth shall not be used as part of the exhibitor's display. Display fixtures, components and merchandise shall not extend beyond the boundaries of an exhibitor's designated space.
- No signs or any part of an exhibit display will be permitted to hang from the ceiling.
- Demonstration areas must be organized within the exhibitor's space. Sampling or demonstration tables must be placed a minimum of 2 feet from the aisle line. Should spectators or samplers interfere with the normal traffic flow in the aisle or overflow into neighboring exhibits, Show Management will have no alternative but to request that the presentation or sampling be eliminated.
- Exhibitors must police their own booths to be sure the noise levels from demonstrations or sound systems is kept to a minimum and does not interfere with others. Remember, the use of sound systems or equipment production sound is an exception to the rule, not constitutes interference with others.

NOTE: Should any inconveniences or discrepancies arise during set-up or during the show, please inform Show Management so the situation can be resolved quickly and amicably.

SET-UP & CONSTRUCTION OF DISPLAYS

End Of Summer Show

VPIER TRADESHOW SERVICES



- Exhibitors using outside contractors must provide a copy of the Certificate of Insurance to both Show Management and Rosemont Exposition Services, Inc.
- Exhibitors may set up and dismantle 10x10 pop-up booth displays provided the job can be completed in 2 hours or less without the use of tools. This rule also applies to a standard 10x10 booth erected with pipe and drape.
- Exhibitor may affix clamp-on lights to the top of a 10x10 pop-up booth display provided no tools, ladders, chairs or furniture are required to do so.
- Exhibitors may calibrate and do repair work on internal circuit boards and may program machinery. Exhibitors may also interconnect computer equipment provided cable does not exceed 10 feet in length.
- Exhibitors may connect lighting, video equipment and light bulbs to an electrical outlet when the outlet has been ordered by the exhibitor. This applies only to 10x10 booths.
- Exhibitors may hang up to ten small pictures, graphics, logos, etc. onto a back wall display when such items are designed to be affixed by pre-set Velcro strips, permanently mounted hooks or snaps.
- Exhibitors may skirt tables provided they do so with their own custom fit skirts, without the use of staples, Velcro or snaps.
- Exhibitors may hand-carry small packages, pop-up displays and desktop computer equipment provided it can be done without the use of a forklift, flat cart or dollies, in one trip only from a designated parking area.
- Exhibitors may inflate balloons provided they are intended as a show give-away item and not used for display purposes.
- Exhibitors may unpack, repack and set out their own product line within the booth for display purposes, provided the product is not machinery.

NEW PROCEDURES

Thank you for your continued support of TransWorld's Jewelry, Fashion & Accessories Show, the most successful event of its kind in the country. As we continue to improve the show and ensure its continued success, there are several important issues we would like to bring to your attention. It is imperative that exhibitors understand and cooperate on these issues. By doing so, all Exhibitors will benefit and will avoid incurring additional charges on-site at the JF&A Show.

The following infractions will be subject to a \$40 fine, or more, depending on the severity and number of infractions:

TABLES AND TABLE COVERS

You must bring your own flame retardant table coverings or order them from Viper Tradeshow Services. You may not, under any circumstance, use Viper drape to cover your table or cover your merchandise during the show or in the evening. If any tables are uncovered before the show opens, you will be required to rent covers and skirts on-site from Viper or your booth will not be allowed to open. Viper does not allow stapling into the tables when using your own covering.

TAKING TABLES FROM OTHER EXHIBITORS

Please make sure that you order the appropriate furnishings for your booth in advance of the show either directly from Viper or from the form in your Exhibitor Kit. Stealing furniture or show supplies from other Exhibitor's booths will not be tolerated regardless of the excuse! Viper will be conducting booth audits, and fining each exhibitor \$40 every time that you need furniture exchanged, or it is uncovered that you stole furniture from someone else's booth. If poles (stanchions and cross-bars) are delivered to your booth and not set up, please go to the Viper Service Desk and ask them to come to your booth to be put in place.

PRODUCTS THAT YOU SELL IN YOUR BOOTH

All products that you sell must be noted on your contract. This not only protects you, but also other Exhibitors. Selling counterfeit merchandise is strictly prohibited. If counterfeit merchandise is found to be sold in your booth, it will be confiscated with NO RECOURSE. These products will be removed from your booth and put into storage until the show ends. We will also monitor for unauthorized sub-letting of booths which is a violation of our contract and also subject to ejection from the show without refund.

EMPTY BOOTHS

You are not allowed to spread into empty booth space adjacent to you paid space. If you are interested in occupying empty space, please see your Account Executive for both prices and availability.

HANGING SIGNS

You may not hang signs or advertising over an aisle. Signs and advertising must be in, or directly above your booth.

With your cooperation, we will be able to create a better show set up experience for everyone involved. If you have any questions or concerns regarding these topics, feel free to contact us. We sincerely thank you for your support and look forward to a successful JF&A Show.

WWW.JFASHOW.COM

Schaumburg, Illinois

Renaissance Schaumburg Hotel & Convention Center

August 27 - 29, 2010

TransWorld's
jf&a
jewelry, fashion & accessories

End Of Summer Show

EXHIBITOR SECURITY GUIDELINES

These Guidelines have been prepared for you, to enhance the security of your personal items and company merchandise before, during and after the show.

SET UP DAYS

During set up, DO NOT leave any personal items such as cash, purses, cell phones, computers, etc. on top of your booth unattended. Make sure they are secure and out of sight at all times. DO try to leave at least one person in your booth, once you have started unpacking your items for sale, until all merchandise is displayed and the tables covered for the evening.

SHOW HOURS

During Show hours, DO keep all cash and receipts in a safe place, away from any areas where it may be grabbed by someone by reaching into or over your booth. DO have enough personnel working the booth, so you may keep watch of your merchandise on display at all times. The security of your booth is your primary responsibility during show hours. Show security is roving the floor during this time, but they cannot watch everyone's booth, especially during busy times. DO give receipts for ALL purchases, this protects you and the customer if a dispute or theft arises. DO contact show Security immediately if any items are found missing or if a theft occurs during show hours. DO get a physical description of anyone seen taking product from your booth or a neighbors booth.

OVERNIGHT

DO put tablecloths over all displayed merchandise on tabletops. DO close the entrance to your booth with tape or chairs. DO NOT leave personal valuables in the open in your booth overnight. DO take the days receipts with you when you leave the booth for the night.

TEAR DOWN

Follow personal guidelines for set up days. If you are shipping your product, DO stay with your merchandise until it has been boxed for shipping, shrink wrapped on pallets and shipping labels applied. If you are taking you product with you, DO keep an employee in the booth until you have moved merchandise into your motor vehicle. DO NOT leave unsecured or open boxes of product in any aisle or on the tabletops and then leave the booth unattended.



We are in the process of compiling an Emergency Contact database for all of our Exhibitors. We need to be able to contact the significant others of our Exhibitors in the event of unforeseen circumstances. Please fill out the form below and send it back to us in your preferred method.

Company Name: _____

Contact 1: _____

Relationship: _____

Name: _____

Address: _____

City, State, Zip: _____

Phone Number: _____ **Cell Number:** _____

Email: _____

Contact 2: _____

Relationship: _____

Name: _____

Address: _____

City, State, Zip: _____

Phone Number: _____ **Cell Number:** _____

Email: _____

ADDITIONAL INFORMATION: _____

TransWorld Exhibits, Inc.

1850 Oak Street
North, IL 60093

P : (800) 323-5462

(847) 446-8434
F : (847) 446-3523

www.tweshows.com

www.haashow.com
www.hcpshow.com

www.jfashow.com

www.wholesalevariety.com

WWW.JFASHOW.COM

Schaumburg, Illinois

Renaissance Schaumburg Hotel & Convention Center

August 27 - 29, 2010

TransWorld's

jf&a

jewelry, fashion & accessories

End Of Summer Show

DUNBAR GLOBAL LOGISTICS

JF&A REGISTRATION FORM

RENAISSANCE SCHAUMBURG HOTEL & CONVENTION CENTER

AUGUST 27 - 29, 2010

SCHEDULE YOUR PICK UP AT (800) 554-7363

PICK UP SCHEDULE

Pick Up from Network Locations: Tuesday, August 24, 2010

** See our full list of cities serviced at www.dunbargloballogistics.com

SHOW SITE DELIVERY SCHEDULE

Wednesday, August 25, 2010 – 2:00 – 6:00pm (ONLY)

SCHEDULING DEADLINE

All reservations must be made with our National Customer Service Team at (800) 554-7363 by Monday, August 23, 2010. Dunbar shipping supplies will be sent to the pick up location prior to the pick up date. Supplies are also available for pick up at our New York and Los Angeles windows. If an overnight delivery of supplies is required; an additional charge of \$50.00 will be added to your account.

PACKAGING GUIDELINES

To protect your shipment, we ask that all packages be securely sealed and properly packaged in reinforced wooden, hard plastic or metal cases not weighting more than sixty (60) pounds per case and not exceeding 30" x 20" x 20".

DUNBAR IS NOT LIABLE FOR ANY INTERNAL OR EXTERNAL DAMAGE TO SHIPPING CONTAINERS OR THEIR CONTENTS.



TO RESERVE YOUR SPACE FILL OUT FORM BELOW AND FAX TO 410-229-1734

Company Name: _____

Contact Name: _____ Booth Number: _____

Street Address: _____

City: _____ State: _____ Zip Code: _____

Phone Number: _____ At Show Cell: _____

Fax Number: _____ Email Address: _____

How many Dunbar bags are being shipped from your office? _____

WWW.DUNBARGLOBALLOGISTICS.COM

WWW.JFASHOW.COM

Schaumburg, Illinois

Renaissance Schaumburg Hotel & Convention Center

August 27 - 29, 2010

TransWorld's
jf&a
jewelry, fashion & accessories

BRINKS GLOBAL LOGISTICS

End Of Summer Show

Brinks Global Services - Show Division

580 Fifth Ave., Suite 400 Tel: 800-232-3149

New York, NY 10036 Fax: 212-704-9523



TransWorld Exhibits JF&A Show

Renaissance Schaumburg Hotel & Convention Center, Schaumburg, IL (August 27 -29, 2010)

Pick up from network location no later than August 24, 2010 (confirm pickup date with Brinks)

for delivery on August 26, 2010 at show site.

FOR PRICING & AVAILABILITY PLEASE CALL (800) 232-3149 OR EMAIL US AT TRADE.SHOWS@BRINKSINC.COM

Inbound delivery at shows:

Supplies:

- Brink's will provide a pouch, a red seal and label for each item/case transported. Please indicate the total number of supply sets that are needed.
- List only one way – Brinks staff will hand out new supplies for outbound service during the show

Additional charges:

- Weight: For security reasons, Brinks is committed to a limit of 60 lbs per item (item = Brinks bag). Any item that exceeds 60 lbs will be charged \$5.00 per pound.
- Items/Cases: We encourage you to break down your show line to several items, rather than one heavy item. Therefore, all items you ship are included in the base rate above – no extra charge.

TOTAL NUMBER OF SUPPLY SETS NEEDED: _____

To register please complete information and sign below. Brinks MUST have this signed registration form in order to pick up your jewelry line.

Company Name: _____

Contact Name: _____ Booth Number: _____

Street Address: _____

City: _____ State: _____ Zip Code: _____

Phone Number: _____ At Show Cell: _____

Fax Number: _____ Email Address: _____

Signature: _____ Date: _____

Billing Information: Bill PU Location Above

Bill to: _____ Show Division Account #: _____

WWW.JFASHOW.COM

Schaumburg, Illinois

Renaissance Schaumburg Hotel & Convention Center

August 27 - 29, 2010

TransWorld's

jf&a

jewelry, fashion & accessories

End Of Summer Show

DIRECTIONS

1551 North Thoreau Drive, Schaumburg, IL 60173

The Renaissance Schaumburg Hotel & Convention Center is located just 14 miles northwest of Chicago's O'Hare Airport and 28 miles northwest of downtown Chicago.

FROM THE NORTH:

Take 294 South or 94 East.

Take 90 (Northwest Tollway) West.

Exit on 53 North.

Take first exit – Algonquin Road – and turn right/West.

Turn left on Thoreau Drive or Meacham Drive.

FROM THE SOUTH:

Take 290 West, it merges with 53 North.

Take Algonquin Road exit.

Turn right at Algonquin Road head West.

Turn left at Meacham Road, 2 blocks to Thoreau Drive, then left.

Turn right into Hotel and Convention Center complex.

FROM THE EAST:

Take 90/94 West.

Exit on 53 North.

Take first exit – Algonquin Road – and turn right/West.

Turn left on Thoreau Drive or Meacham Road.

FROM THE WEST:

Take I-90 (Northwest Tollway) East.

Exit on 53 North.

Take first exit – Algonquin Road – and turn right/West.

Turn left on Thoreau Drive or Meacham Road.

FROM CHICAGO O'HARE AIRPORT:

West on Interstate 90, exit Route 53 North, take Algonquin Road exit. Turn right at Algonquin Road, head west. Turn left at Meacham Road, 2 blocks to Thoreau Drive, then left. Turn right into Hotel and Convention Center complex.

Visit flychicago.com for airport info.

METRA STATION:

The Palatine Station on the Union Pacific District Northwest Line is located 4 miles from the Hotel. The Hotel will provide shuttle service between the station and the Hotel:

- Wednesday: 5:30 p.m. – 8:30 p.m.
- Thursday: 7:30 a.m. – 9:30 a.m. & 5:30 p.m. – 8:30 p.m.
- Friday: 7:30 a.m. – 9:30 a.m. & 5:30 p.m. – 8:30 p.m.



WWW.**JFASHOW**.COM

Schaumburg, Illinois

Renaissance Schaumburg Hotel & Convention Center

August 27 - 29, 2010

TransWorld's

jf&a

jewelry, fashion & accessories

ACCOMMODATIONS

End Of Summer Show

RENAISSANCE SCHAUMBURG HOTEL & CONVENTION CENTER

1551 North Thoreau Drive

Schaumburg, IL 60173

P: (847) 303-4100

*Mention Jewelry, Fashion & Accessories Show for special rates

Rates

Single/Double - \$109.00 + tax + service charges

WWW.JFASHOW.COM

Schaumburg, Illinois

Renaissance Schaumburg Hotel & Convention Center

August 27 - 29, 2010



End Of Summer Show

DIRECTORY INFORMATION FORM

PLEASE COMPLETE ALL FIELDS AND FAX BACK TO CONNIE AT (847) 446-3523 BY JULY 30, 2010.

COMPANY: _____ BOOTH: _____

PRIMARY CONTACT: _____

STREET ADDRESS: _____

CITY: _____ STATE: _____ ZIP CODE: _____

COUNTRY: _____ TELEPHONE: _____

TOLL FREE: _____ FAX NUMBER: _____

EMAIL ADDRESS: _____

WEBSITE: _____

PRODUCTS TO BE DISPLAYED (50 WORDS OR LESS):

Before you submit this form, don't forget to also complete the following forms:

PRODUCT INDEX FORM

EXHIBITOR BADGE FORM

EXHIBITOR INVITATIONS

DIRECTORY PRODUCT INDEX FORM

PLEASE COMPLETE ALL FIELDS AND FAX BACK TO CONNIE AT (847) 446-3523 BY JULY 30, 2010.

COMPANY: _____

BOOTH: _____

PLEASE CHECK ALL THAT APPLY:

- | | | | |
|------------------------------------------------------------|----------------------------------------------------|--------------------------------------------------------|-----------------------------------------------------|
| <input type="checkbox"/> ARTIFICIAL FLOWERS, TREES & FRUIT | <input type="checkbox"/> DECORATIVE ACCESSORIES | <input type="checkbox"/> JEWEL BOXES | <input type="checkbox"/> SEASONAL MERCHANDISE |
| <input type="checkbox"/> ARTS & CRAFTS SUPPLIES | <input type="checkbox"/> DESIGNER FASHIONS | <input type="checkbox"/> JEWELRY | <input type="checkbox"/> SECURITY DEVICES |
| <input type="checkbox"/> AS-SEEN-ON-TV | <input type="checkbox"/> DESIGNER JEWELRY | <input type="checkbox"/> JEWELRY & METAL CLEANER | <input type="checkbox"/> SHOES & SHOE CARE |
| <input type="checkbox"/> AUDIO CASSETTES & CD'S | <input type="checkbox"/> DIAMONDS | <input type="checkbox"/> JEWELRY DISPLAYS | <input type="checkbox"/> SILVER JEWELRY |
| <input type="checkbox"/> BABY NEEDS | <input type="checkbox"/> DOLLAR STORE ITEMS | <input type="checkbox"/> JUDAICA | <input type="checkbox"/> SILVERWARE |
| <input type="checkbox"/> BAR ACCESSORIES | <input type="checkbox"/> DOLLS | <input type="checkbox"/> KEY CHAINS | <input type="checkbox"/> SOCKS |
| <input type="checkbox"/> BARBECUE EQUIPMENT | <input type="checkbox"/> DRESSES | <input type="checkbox"/> KITCHENWARE | <input type="checkbox"/> SOUVENIRS |
| <input type="checkbox"/> BASKETS | <input type="checkbox"/> EASTER MERCHANDISE | <input type="checkbox"/> KNITWEAR | <input type="checkbox"/> SPORTING GOODS |
| <input type="checkbox"/> BATH ITEMS | <input type="checkbox"/> ELECTRONICS | <input type="checkbox"/> LAMPS & LAMP SHADES | <input type="checkbox"/> SPORTSWEAR |
| <input type="checkbox"/> BATTERIES | <input type="checkbox"/> EMBROIDERED EMBLEMS | <input type="checkbox"/> LAWN & GARDEN EQUIPMENT | <input type="checkbox"/> STATIONERY |
| <input type="checkbox"/> BEACH ITEMS | <input type="checkbox"/> ETHNIC ARTS & CRAFTS | <input type="checkbox"/> LEATHER GOODS | <input type="checkbox"/> STORE FIXTURES |
| <input type="checkbox"/> BEADS | <input type="checkbox"/> EYEGLASSES | <input type="checkbox"/> LICENSED PRODUCTS | <input type="checkbox"/> SUNGLASSES |
| <input type="checkbox"/> BELTS & BUCKLES | <input type="checkbox"/> FASHION ACCESSORIES | <input type="checkbox"/> LINENS & DOMESTICS | <input type="checkbox"/> T - SHIRTS |
| <input type="checkbox"/> BLANKETS & PILLOWS | <input type="checkbox"/> FIGURINES | <input type="checkbox"/> LUGGAGE | <input type="checkbox"/> TELEPHONES |
| <input type="checkbox"/> BLOUSES | <input type="checkbox"/> FINDINGS | <input type="checkbox"/> MAGNETIC PRODUCTS | <input type="checkbox"/> TELEVISIONS |
| <input type="checkbox"/> BODY JEWELRY | <input type="checkbox"/> FINE JEWELRY | <input type="checkbox"/> MEN'S & BOYS' WEAR | <input type="checkbox"/> TIES |
| <input type="checkbox"/> BOOKS | <input type="checkbox"/> FOOTWEAR | <input type="checkbox"/> MIRRORS | <input type="checkbox"/> TOILETRIES |
| <input type="checkbox"/> BOUTIQUE ITEMS | <input type="checkbox"/> FURNITURE | <input type="checkbox"/> MUSIC BOXES | <input type="checkbox"/> TOOLS |
| <input type="checkbox"/> BRASSWARE | <input type="checkbox"/> FURS | <input type="checkbox"/> NAIL CARE PRODUCTS | <input type="checkbox"/> TOTE BAGS |
| <input type="checkbox"/> BRIEFCASES & PORTFOLIOS | <input type="checkbox"/> GAMES & ACCESSORIES | <input type="checkbox"/> NOVELTIES | <input type="checkbox"/> TOWELS |
| <input type="checkbox"/> BUTTONS | <input type="checkbox"/> GEMSTONES | <input type="checkbox"/> OUTDOOR PRODUCTS | <input type="checkbox"/> TOYS, HOBBIES, ETC. |
| <input type="checkbox"/> CALCULATORS & ELECTRONICS | <input type="checkbox"/> GENERAL MERCHANDISE | <input type="checkbox"/> PENS & PENCILS | <input type="checkbox"/> UMBRELLAS & RAINWEAR |
| <input type="checkbox"/> CAMERAS & PHOTO EQUIPMENT | <input type="checkbox"/> GIFTWARE | <input type="checkbox"/> PERFUME | <input type="checkbox"/> VCR & DVD PLAYERS |
| <input type="checkbox"/> CANDLES | <input type="checkbox"/> GLASSWARE | <input type="checkbox"/> PET SUPPLIES | <input type="checkbox"/> VIDEO EQUIPMENT |
| <input type="checkbox"/> CELLULAR PHONES / ACCESSORIES | <input type="checkbox"/> GLOVES | <input type="checkbox"/> PICTURES & FRAMES | <input type="checkbox"/> VITAMINS & HEALTH PRODUCTS |
| <input type="checkbox"/> CHILDREN'S BOOKS | <input type="checkbox"/> HAIR ACCESSORIES | <input type="checkbox"/> PLUSH TOYS | <input type="checkbox"/> WALL DECOR |
| <input type="checkbox"/> CHILDREN'S CLOTHING | <input type="checkbox"/> HAIR CARE PRODUCTS | <input type="checkbox"/> POSTERS | <input type="checkbox"/> WALLETS |
| <input type="checkbox"/> CHRISTMAS MERCHANDISE | <input type="checkbox"/> HANDBAGS | <input type="checkbox"/> POTPOURRI | <input type="checkbox"/> WATCH BANDS |
| <input type="checkbox"/> CLOCKS | <input type="checkbox"/> HANDICRAFTS | <input type="checkbox"/> PREMIUMS | <input type="checkbox"/> WATCHES |
| <input type="checkbox"/> CLOTHING | <input type="checkbox"/> HARDWARE | <input type="checkbox"/> PUBLICATIONS | <input type="checkbox"/> WICKER ITEMS |
| <input type="checkbox"/> COATS / JACKETS | <input type="checkbox"/> HATS, CAPS & HEADWEAR | <input type="checkbox"/> RADIOS, STEREOS & CD PLAYERS | <input type="checkbox"/> WIGS |
| <input type="checkbox"/> COLLECTIBLES / MEMORABILIA | <input type="checkbox"/> HEALTH & BEAUTY AIDS | <input type="checkbox"/> RELIGIOUS ITEMS | <input type="checkbox"/> WINDCHIMES |
| <input type="checkbox"/> COMPUTER EQUIPMENT | <input type="checkbox"/> HOME DECOR & FURNISHINGS | <input type="checkbox"/> RUGS | <input type="checkbox"/> WINDSOCKS |
| <input type="checkbox"/> COOKWARE | <input type="checkbox"/> HOSIERY | <input type="checkbox"/> SCARVES & FASHION ACCESSORIES | <input type="checkbox"/> WOMEN'S CLOTHING |
| <input type="checkbox"/> COSMETICS | <input type="checkbox"/> HOUSEWARES | <input type="checkbox"/> SCHOOL SUPPLIES | |
| <input type="checkbox"/> COSTUME JEWELRY | <input type="checkbox"/> INCENSE | <input type="checkbox"/> SCISSORS & SHEARS | |
| <input type="checkbox"/> CRYSTAL / STEMWARE | <input type="checkbox"/> INFANT WEAR & ACCESSORIES | <input type="checkbox"/> SCOOTERS | |

WWW.JFASHOW.COM

Schaumburg, Illinois

Renaissance Schaumburg Hotel & Convention Center

August 27 - 29, 2010



End Of Summer Show

EXHIBITOR BADGE ORDER FORM

PLEASE COMPLETE ALL FIELDS AND FAX BACK TO CONNIE AT (847) 446-3523 BY JULY 30, 2010.

This form is for the employees or representatives working on the booth only. BADGES WILL BE MAILED PRIOR TO THE SHOW.

COMPANY: _____

PRIMARY CONTACT: _____

STREET ADDRESS: _____

CITY: _____ STATE: _____ ZIP CODE: _____

COUNTRY: _____ TELEPHONE: _____

TOLL FREE: _____ FAX NUMBER: _____

EMAIL ADDRESS: _____

WEBSITE: _____

NOTE: All badges will be mailed to the contact person. If you need additional badges, please make a copy of this form and continue adding the additional names. Badges will be printed only for the complete names listed.

PLEASE PRINT:

WWW.JFASHOW.COM

Schaumburg, Illinois

Renaissance Schaumburg Hotel & Convention Center

August 27 - 29, 2010

TransWorld's
jf&a
jewelry, fashion & accessories

End Of Summer Show

EXHIBITOR INVITATIONS ORDER FORM

USE THESE PERSONALIZED INVITATIONS TO INVITE BUYERS TO YOUR BOOTH!

EXHIBITOR INVITATIONS ARE FREE, EASY & EFFECTIVE!

Study after study shows that the most effective pre-show promotion is exhibitor driven. Sending an invitation to your customers and prospects gets them to the show, but it also gets them to make a beeline to your booth!

- Send invitations to your customers and prospects with pre-show sales literature.
- Enclose invitations with invoice and statement mailings.
- When you exhibit at other shows, be sure to distribute invitations from your booth.

PLEASE COMPLETE ALL FIELDS BELOW:

COMPANY: _____ BOOTH NUMBER: _____

PRIMARY CONTACT: _____

STREET ADDRESS: _____

CITY: _____ STATE: _____ ZIP CODE: _____

COUNTRY: _____ TELEPHONE: _____

TOLL FREE: _____ FAX NUMBER: _____

EMAIL ADDRESS: _____

QUANTITY OF INVITATIONS NEEDED (100 MINIMUM): _____

PLEASE COMPLETE AND FAX BACK TO YIANNA AT (847) 446-3523 BY JULY 30, 2010.

*A sample Exhibitor Invitation is enclosed in the Exhibitor Service Kit. The sample indicates the areas that can be personalized with your company name and booth number(s).